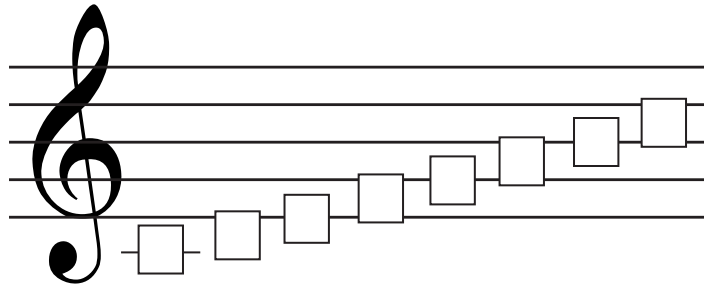
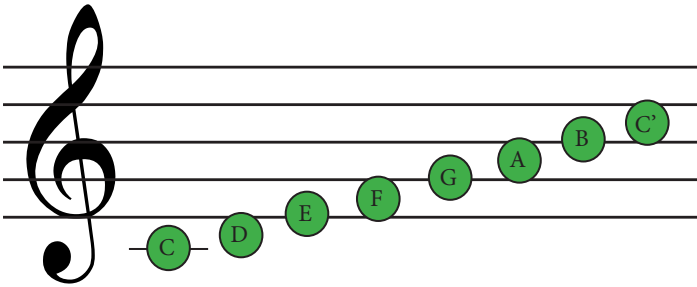


C Major Scale

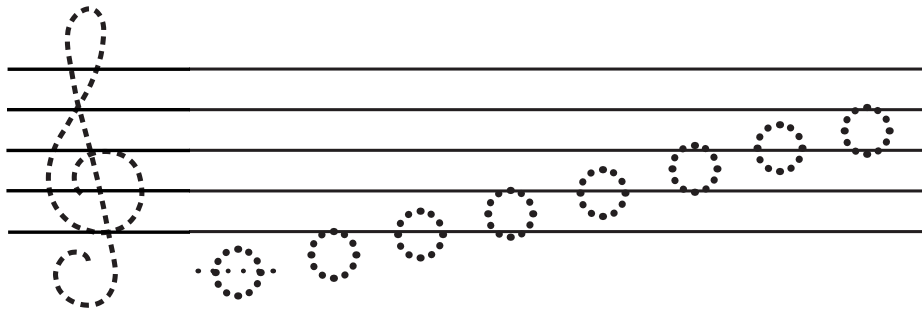
The notes of the C Major Scale are **C D E F G A B C'**.

Write the correct note names in the boxes below.

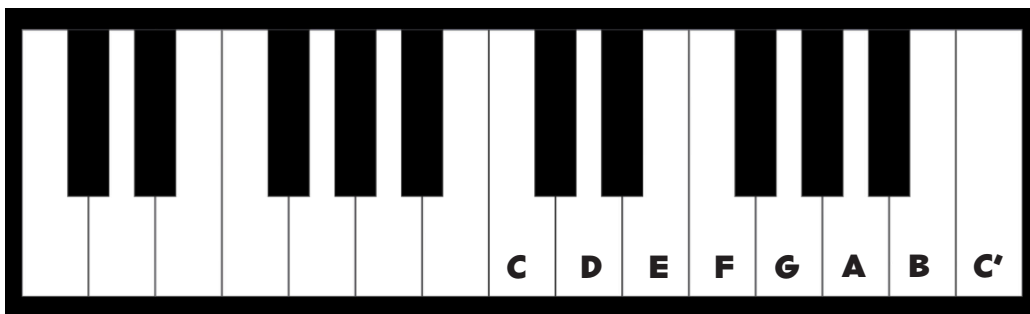


The middle C uses a ledger line. Remember, ledger line extends the staff to make sure the notes that are too high or too low still fit on the staff.

Trace the treble clef and notes to write your own C Major scale.



Beginning with middle C, draw an arrow from the correct note to the correct key on the piano.

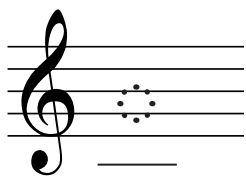


Staff Lesson 5

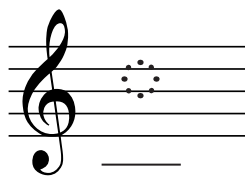
Draw the note on the correct line or space on the staff. Only use the lines and spaces between **Middle C and C'**.



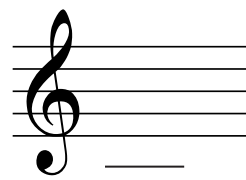
C



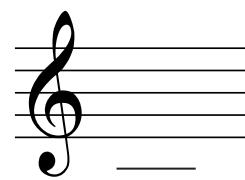
A



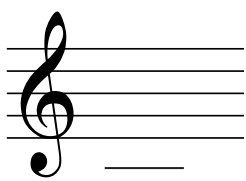
C'



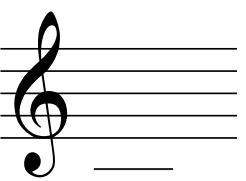
G



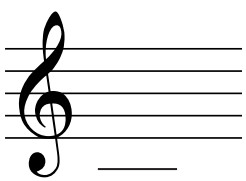
D



E



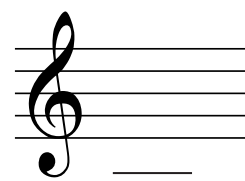
B



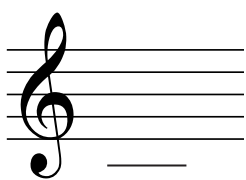
F



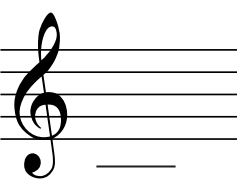
G



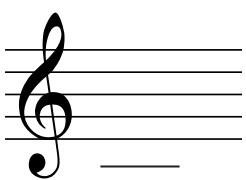
C'



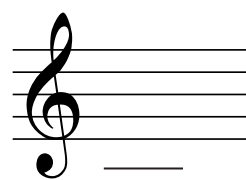
A



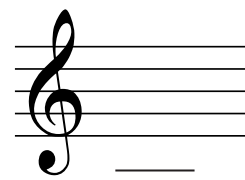
D



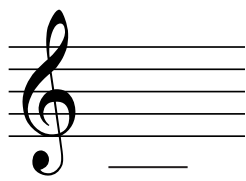
G



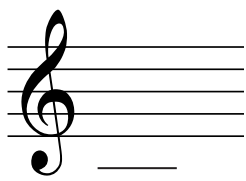
E



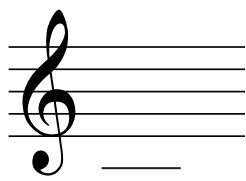
B



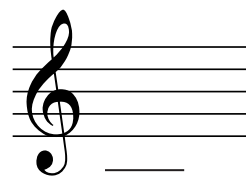
F



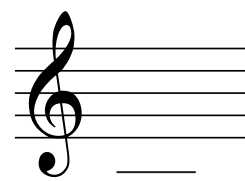
C



E



B



C'



D



A



F



C



B

Choose the correct word spelled out of the notes on the staff.

BED **AGE** **EGG**

EGG **AGE** **BEE**

DOG **FEE** **BED**

CALM **DEED** **CAFE**

CAFE **DEAD** **BEEF**

BEEF **BEAD** **DAFT**

Spell words out of the notes on the staff.

F

Write out the notes that spell the word below the staff.

FEE

BAG

FACE

FILL IN THE BLANKS

The notes in the C Major scale are _____.

ABCDEFG

CEGC'

CDEFGABC'

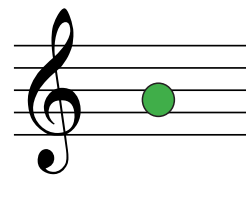
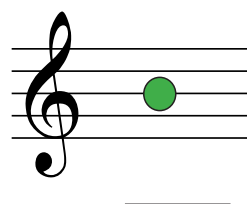
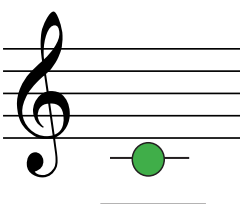
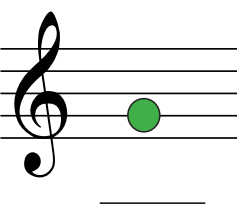
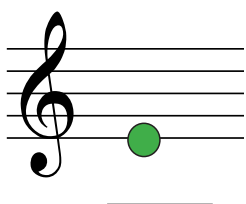
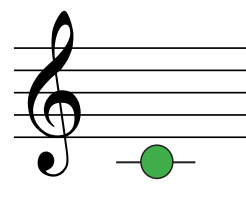
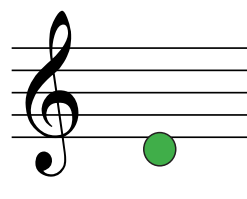
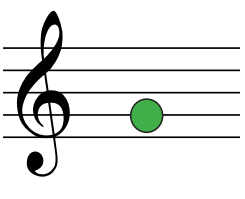
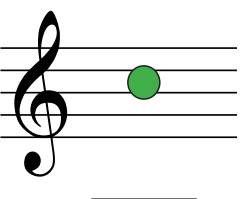
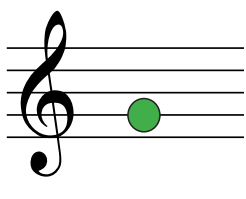
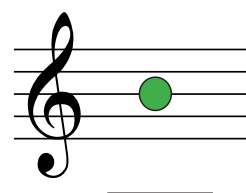
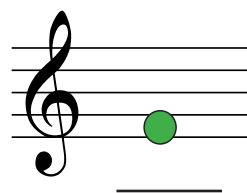
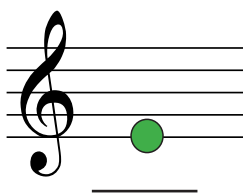
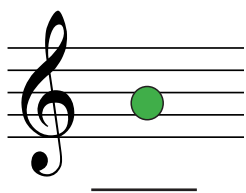
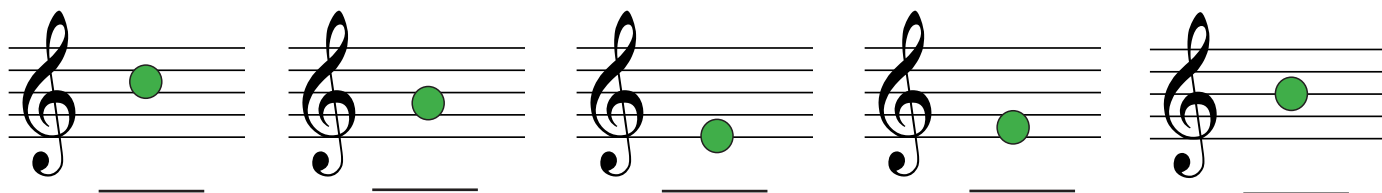
The C Major scale starts on C and ends on _____.

C

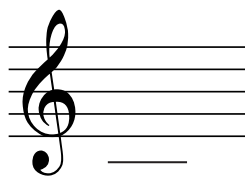
E

G

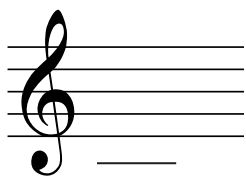
Name the notes of the C Major scale



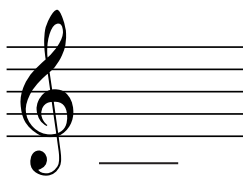
Draw the notes on the correct lines or spaces.



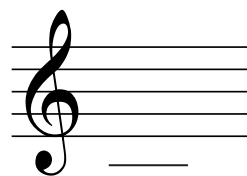
E



D



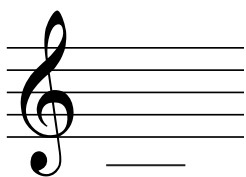
G



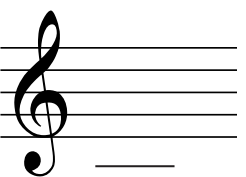
C



B



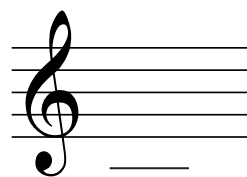
C'



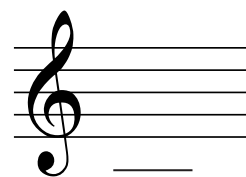
F



A



D



G