



The Staff and the Treble Clef

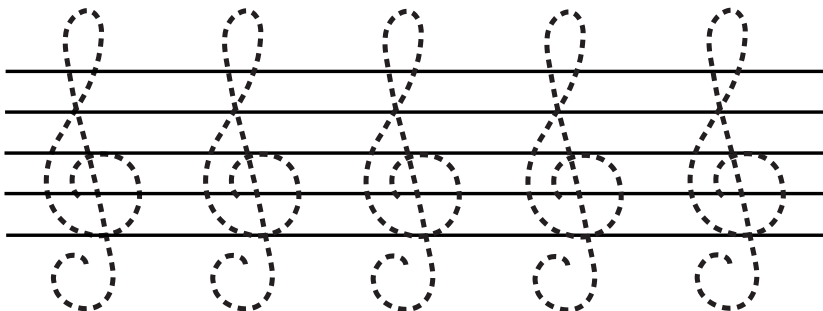
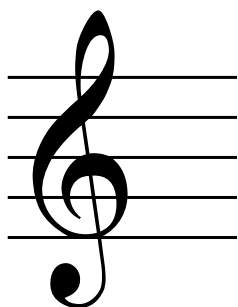
Music is written on five lines called the **staff**.

Draw lines between the dots to make a musical staff!



A **clef** is given at the beginning of each staff.

On the staff below, trace the **treble clefs**.



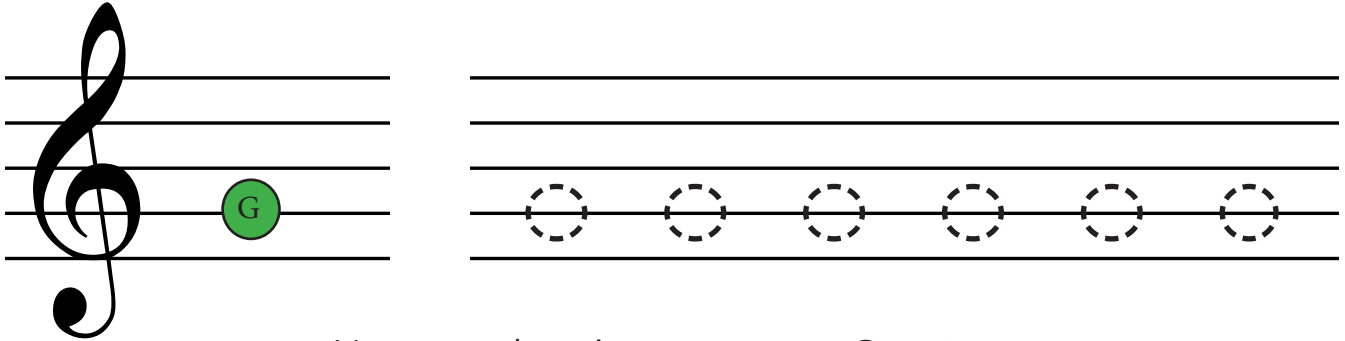
Now, try drawing five of your own **treble clefs**.



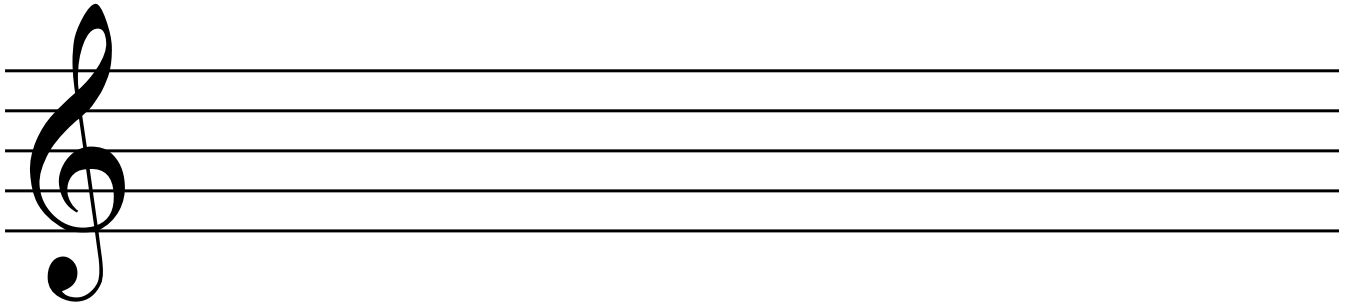
Staff Lesson 1

The **treble clef** circles the note G. The treble clef is used for **higher** notes.

On the staff below, trace the **G notes**.



Now, try drawing your own **G notes**.



The Staff and the Treble Clef: Assess

Music is written on five lines called the _____.

Staff

Stick

Clef

A _____ is given at the beginning of each staff.

Letter

Clef

Circle

The _____ clef circles the note G.

Treble

Bass

Alto

The treble clef is used for _____ notes.

Lower

Serious

Higher

The treble clef circles the note _____.

F

G

A