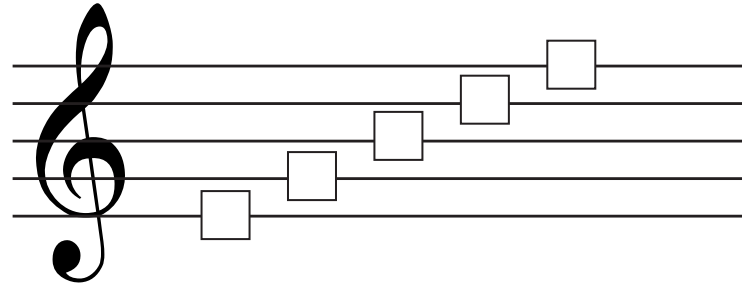
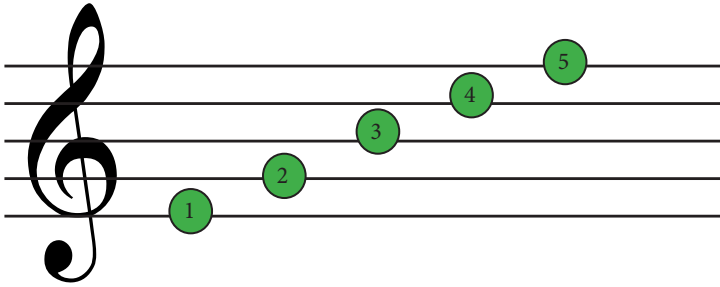
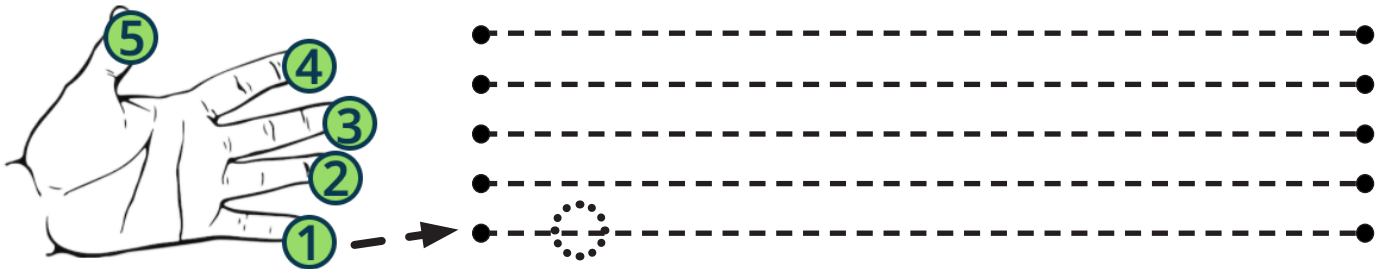


## Notes on the Lines

The lines of the staff are numbered from the **bottom** to the **top**.  
Write the numbers of the lines in the boxes below.



Your hand has five fingers just like the **staff has five lines**.  
Draw an arrow from the hand staff to the correct dotted line.  
Trace the dotted lines of the staff and draw notes on each line.

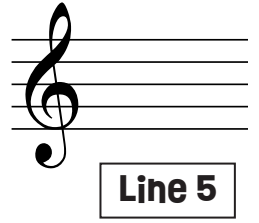
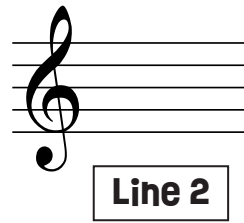
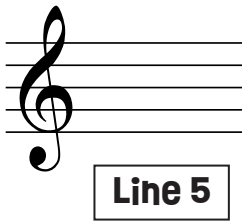
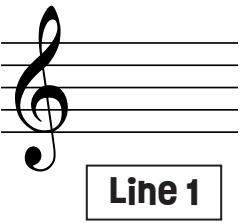
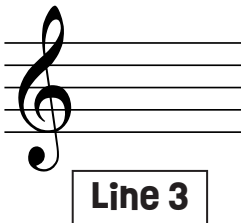
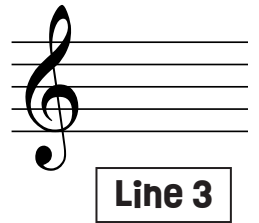
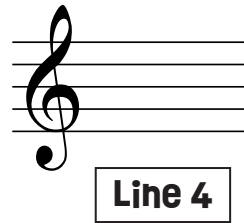
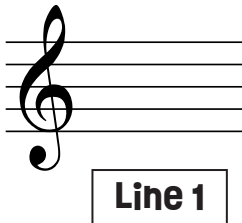
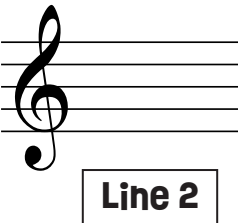
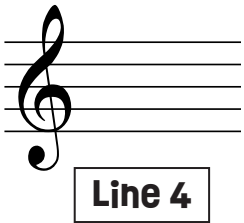
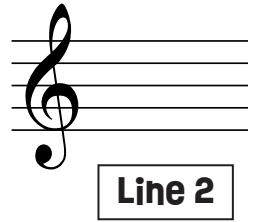
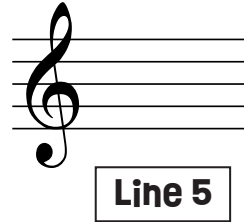
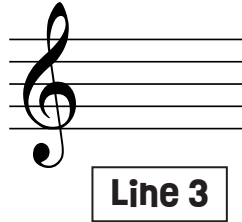
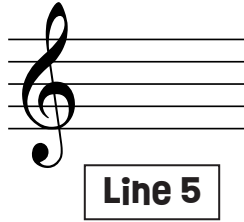
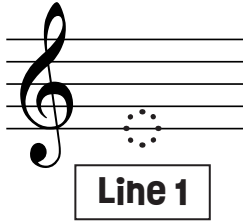


Name the correct line the note is on.

|  |  |  |  |  |
|--|--|--|--|--|
|  |  |  |  |  |
|  |  |  |  |  |
|  |  |  |  |  |

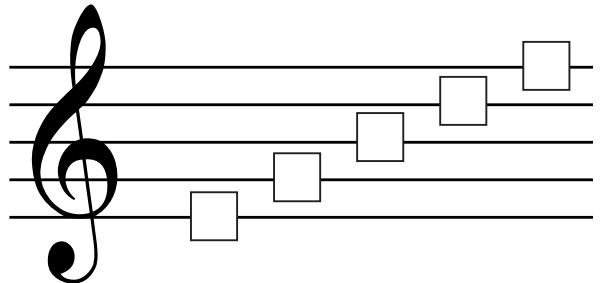
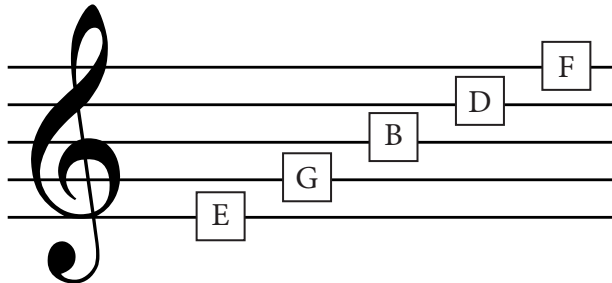
# Staff Lesson 2

Place a note on the correct line.



The notes on the lines are E, G, B, D, F.

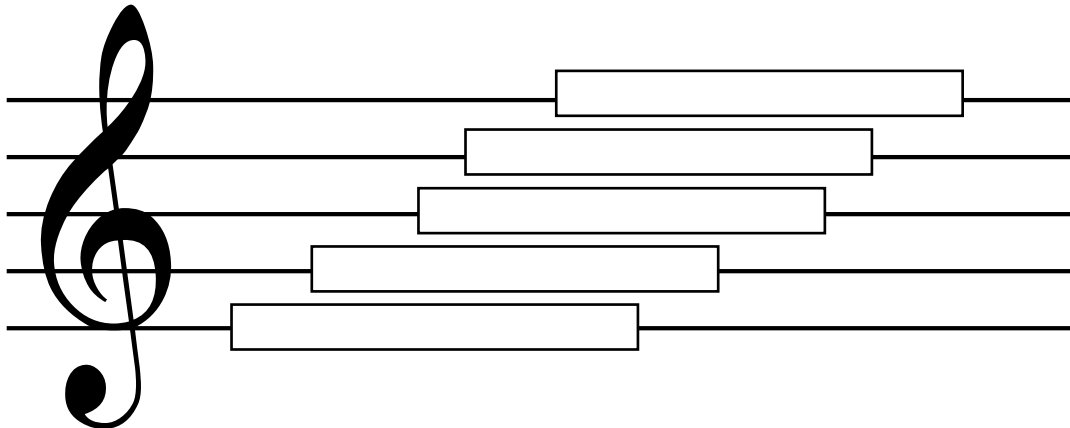
Write the correct name in the boxes for each note on the lines.



You can remember the notes on the lines with this saying:

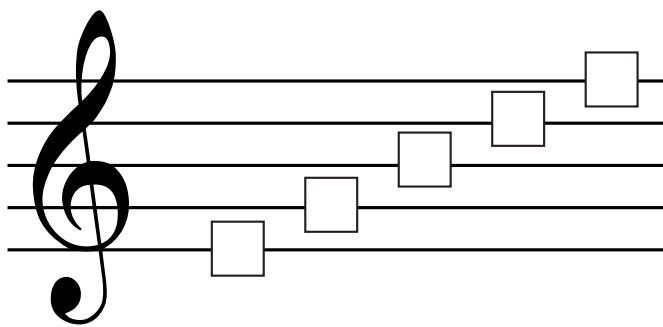
**E**very **G**ood **B**aby **D**eserves **F**udge

Try writing your own in the spaces below!

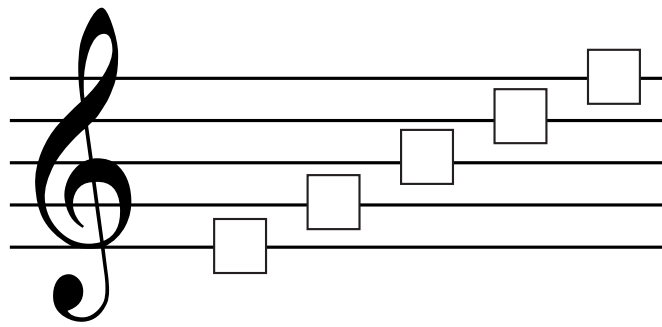


# Staff Lesson 2

Number the lines.



Name the notes on the lines.



Draw the note on the correct line.



**F**



**E**



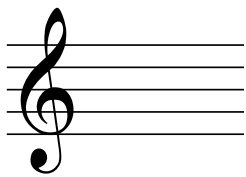
**G**



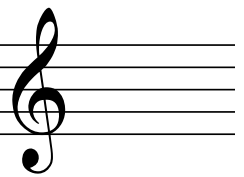
**F**



**D**



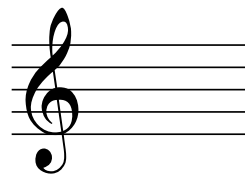
**B**



**D**



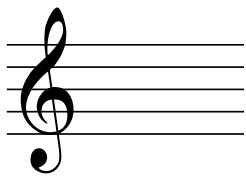
**B**



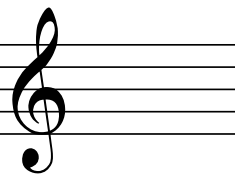
**E**



**G**



**G**



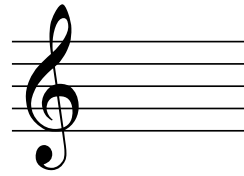
**E**



**D**



**F**



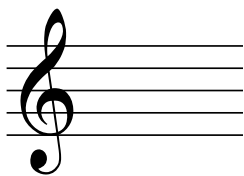
**B**



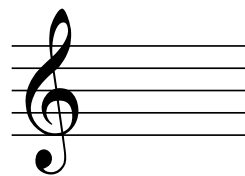
**B**



**F**



**E**



**D**



**G**

Choose the correct word spelled out of the notes on the staff.

**BED**   **FED**   **EGG**

**FED**   **EGG**   **BEE**

**EGG**   **FED**   **DOG**

**FARM**   **DEED**   **BEEF**

**HORN**   **FEED**   **BEEF**

**BEEF**   **DEED**   **DAFT**

Spell words out of the notes on the staff.

**F**   \_   \_

\_   \_   \_

\_   \_   \_

\_   \_   \_

\_   \_   \_

\_   \_   \_

Write out the notes that spell the word below the staff.

**FEE**

**BEG**

**EDGE**

Name the notes on the lines of the treble staff.

|  |  |  |  |  |
|--|--|--|--|--|
|  |  |  |  |  |
|  |  |  |  |  |
|  |  |  |  |  |

Draw the notes on the correct lines.

|  |  |  |  |  |
|--|--|--|--|--|
|  |  |  |  |  |
|  |  |  |  |  |
|  |  |  |  |  |