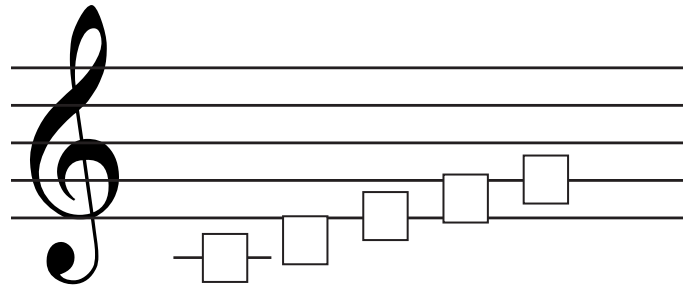
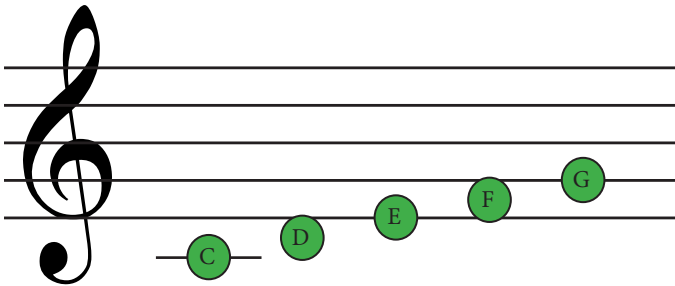


Middle C to G

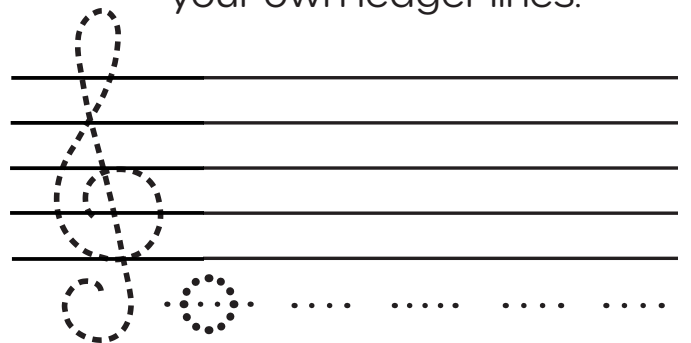
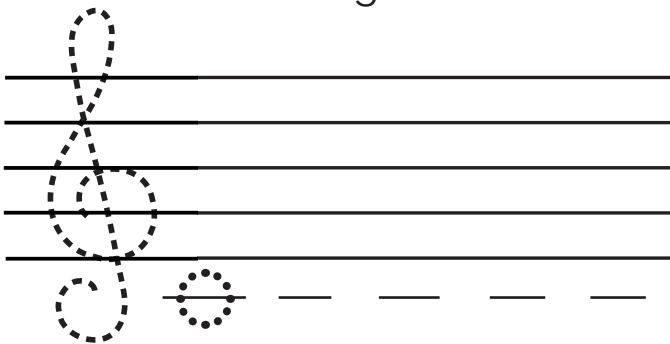
C D E F G are the first five notes of the C major scale.
Write the correct note names in the boxes below.



This C uses a **ledger** line. A **ledger** line extends the staff to make sure that notes that are too high or too low still fit on the staff.

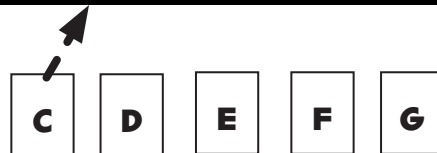
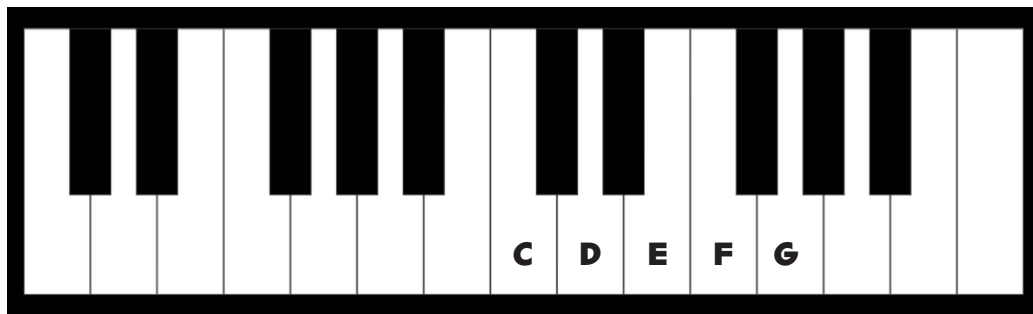
Trace the treble clef and practice writing C on the ledger lines.

Now, trace the treble clef and write C on your own ledger lines.



This C is also sometimes called **Middle C** because it is in middle of the piano.

Beginning with middle C, draw an arrow from the correct note to the correct key on the piano.



Draw the note on the correct line or space on the staff. Only use the lines and spaces between **Middle C and G**.

C

G

D

F

E

E

F

C

G

D

F

D

G

E

C

G

C

E

D

F

D

E

F

C

G

Fill in the Blanks

_____ are the first 5 notes of the C major scale.

Scale

CDEFG

ABCDE

A _____ line is used for the C below the staff.

Staff

Ledger

Bar

The C on a ledger line is sometimes called _____ C.

High

Strong

Middle

Name the notes on the treble staff.

The image shows a 4x5 grid of treble clef staves. Each staff contains a single green note on a different line or space. The notes are: Row 1: C1, C2, C3, C4, C5; Row 2: C4, C5, C6, C7, C8; Row 3: C5, C6, C7, C8, C9; Row 4: C6, C7, C8, C9, C10.