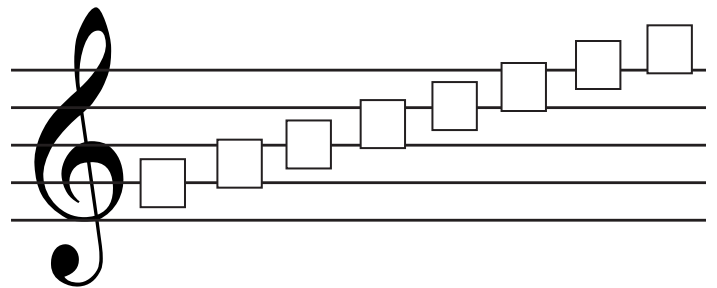
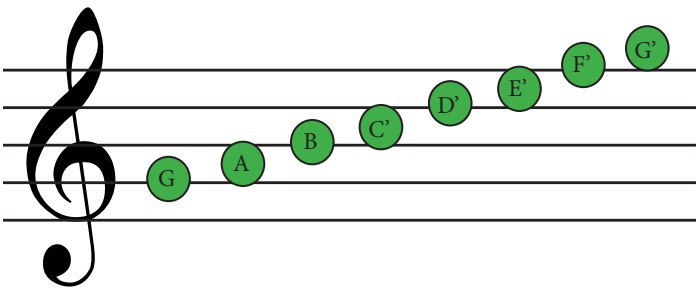


G to G'

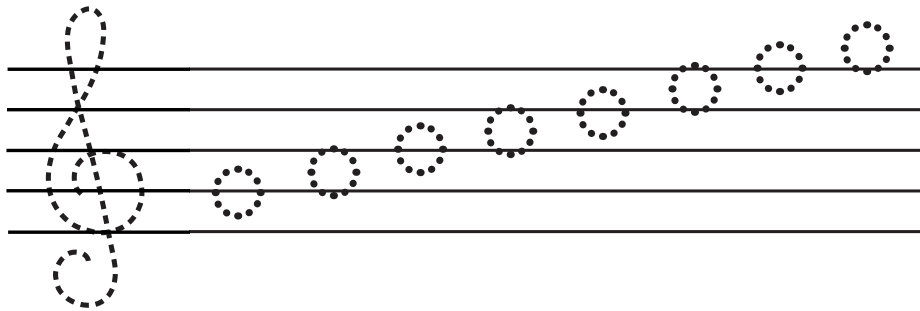
The first seven letters of the alphabet are used to name the notes: **A B C D E F G**.

After the note G, the note names start over again, beginning on the A.

Write the correct names in the boxes from **G to G'**.

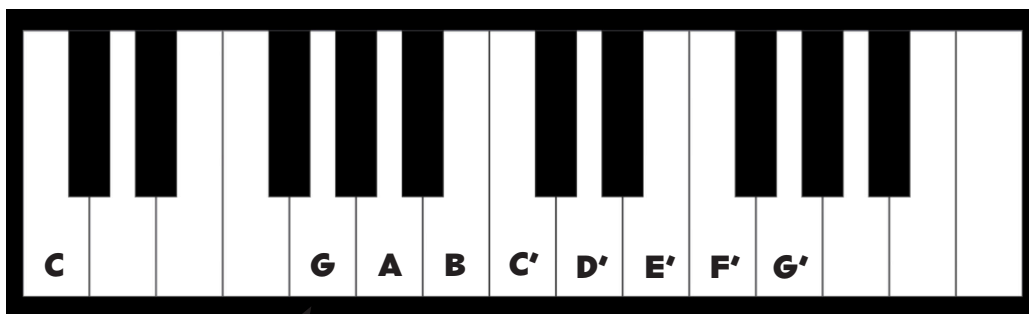


Trace the treble clef and notes to write your own scale from G to G'.



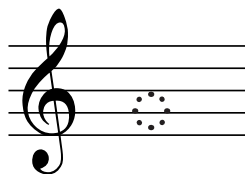
Beginning with G, draw an arrow from the correct note to the correct key on the piano.

Notice how the keys on a piano repeat the same pattern.

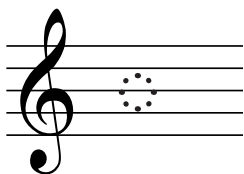


Staff Lesson 6

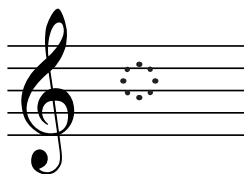
Draw the note on the correct line or space on the staff. Only use the lines and spaces between **G** and **G'**.



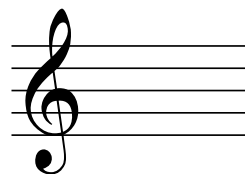
G



B



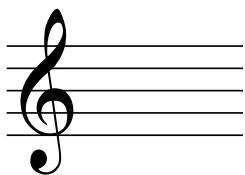
C'



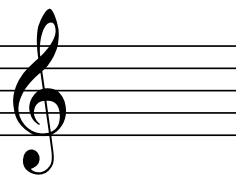
G'



F'



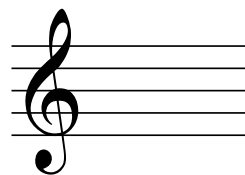
E'



A



D'



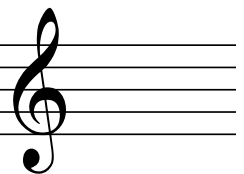
B



G



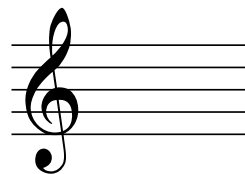
F'



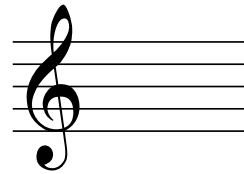
D'



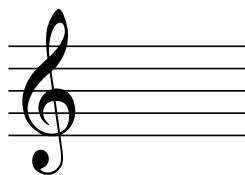
G



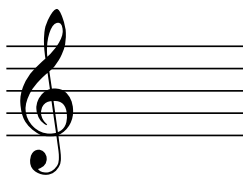
A



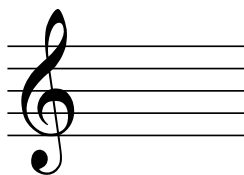
B



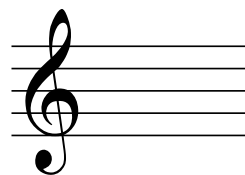
G'



C'



A



E'



D'



G



A



B

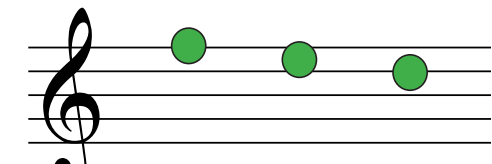


G'

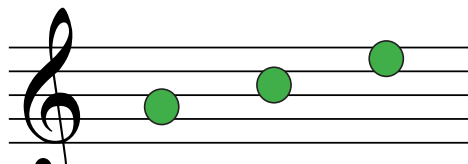


F'

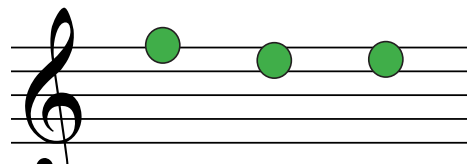
Choose the correct word spelled out of the notes on the staff.



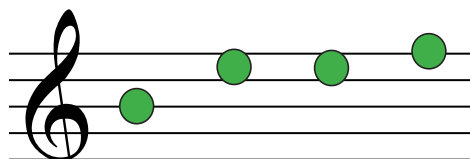
FED **ACE** **EGG**



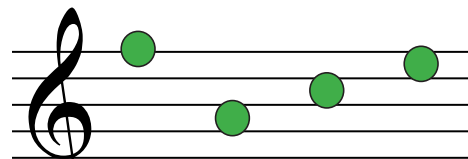
ACE **AGE** **BEE**



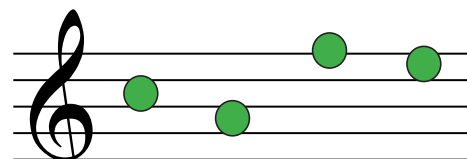
DOG **FEE** **BED**



CAFE **DEED** **BEEF**

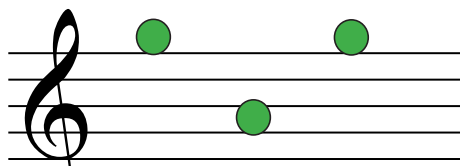


DEAD **FACE** **BEEF**

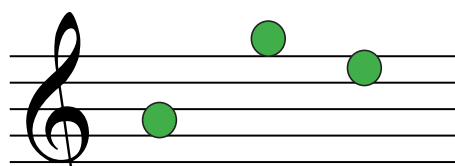


CAFE **DEED** **BEEF**

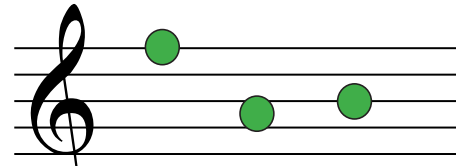
Spell words out of the notes on the staff.



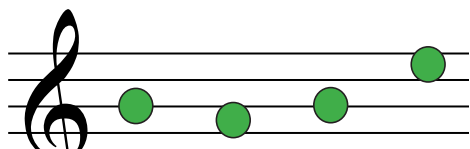
G _ _



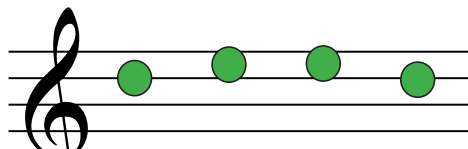
_ _ _



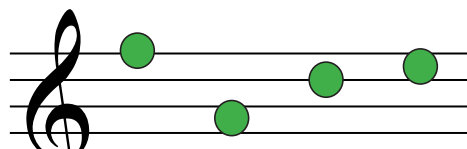
_ _ _



_ _ _

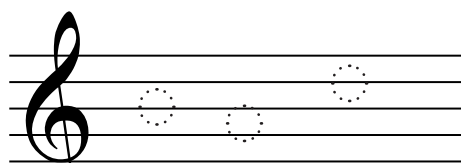


_ _ _ _

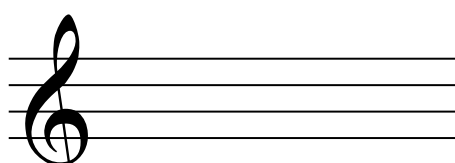


_ _ _

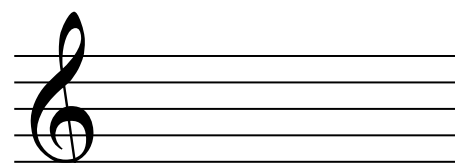
Write out the notes that spell the word below the staff.



BAD



BAG



BEAD

FILL IN THE BLANKS

The letters of the alphabet that are used in music are _____.

LMNOP

CDEFGHI

ABCDEFG

After the note _____, the note names start over again with A.

G

E

H

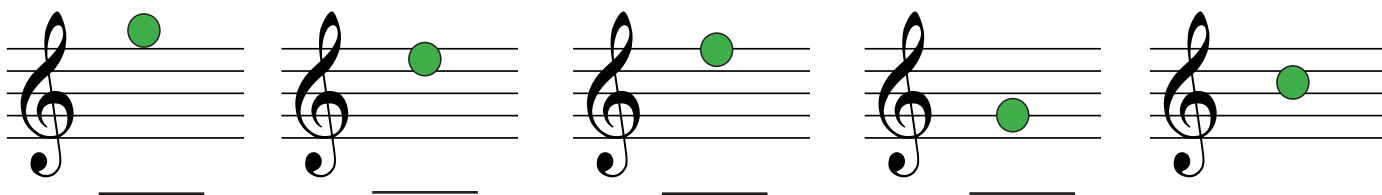
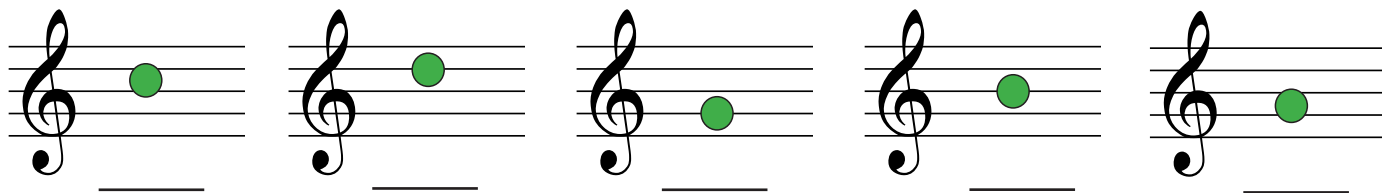
The high G (G') is written _____ the staff.

ABOVE

BELOW

BESIDE

Name the notes from G to G'.



Draw the notes on the staff.



G'

A

F'

G

E'



B

C'

E'

B

G'