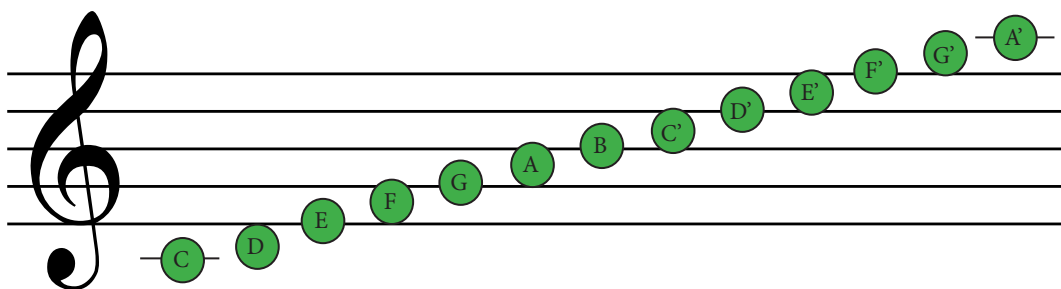


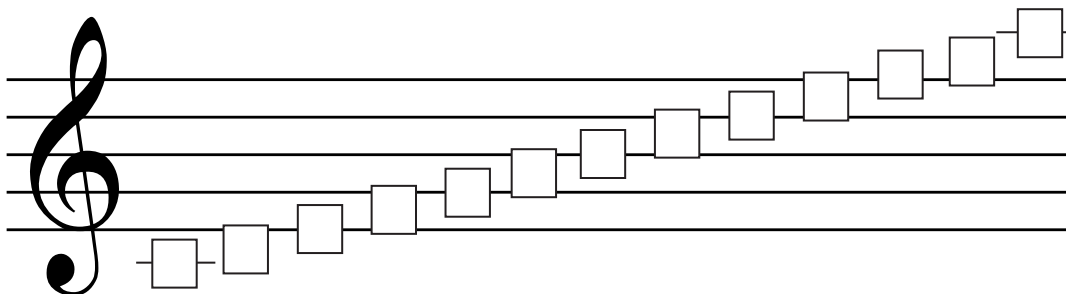
Ledger Lines: Middle C to High A

Let's put everything we've learned in Staff Lessons 1 - 6 together! Let's name the notes from **Middle C** to **high A (A')**.

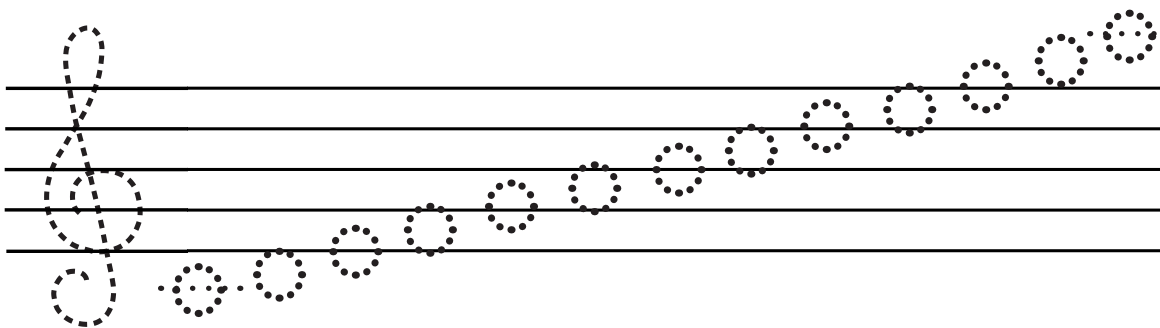
High A is on the ledger line above the staff.



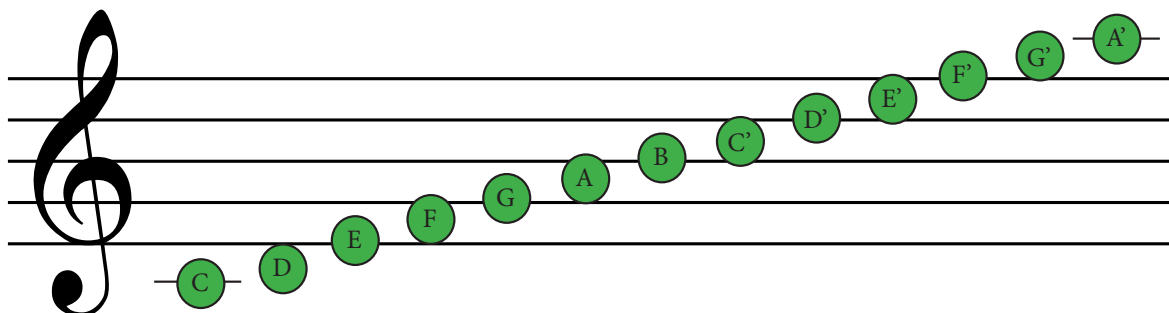
Write the correct note names in the boxes from middle C to A'.



Trace the treble clef and notes to write your own scale from middle C to A'.



Staff Lesson 7



- Find three different colored pencils or markers and follow the directions.
1. Use your first color to draw a circle around the notes that use ledger lines.
 2. Use your second color to draw a rectangle around the C Major scale.
 3. Use your third color to draw a line through the musical alphabet.

Draw the note on the correct line or space on the staff. Only any of the lines and spaces between **Middle C and A'**.

C

B

A

G'

D'

E'

D

F

C'

G

A'

E

F'

C

A'

Choose the correct word spelled out of the notes on the staff.

BED **ACE** **EGG**

BAD **ACE** **BEE**

DOG **FEE** **CAB**

CAFE **DEED** **FACE**

CAFE **FEED** **BEEF**

EDGE **FADE** **ACED**

Spell words out of the notes on the staff.

A _ _ _

_ _ _

_ _ _

_ _ _

_ _ _

_ _ _

Write out the notes that spell the word below the staff. If there are two of the same letter, try to use two different places on the staff.

BEE

EGG

DEED

FILL IN THE BLANKS

_____ lines extend the staff to make sure notes that are too high or too low notes will still fit on the staff.

STAFF

LEDGER

BAR

_____ both use ledger lines.

**MIDDLE C &
HIGH A**

G & B

**HIGH G &
HIGH A**

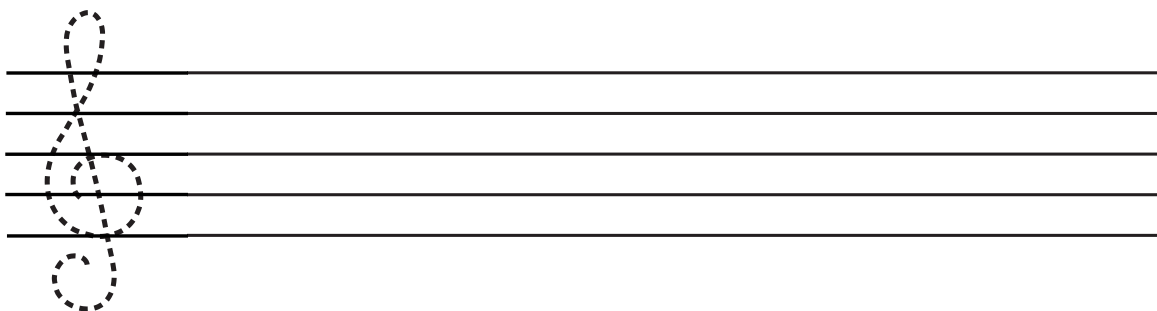
The letters of the alphabet that are used in music are _____.

LMNOP

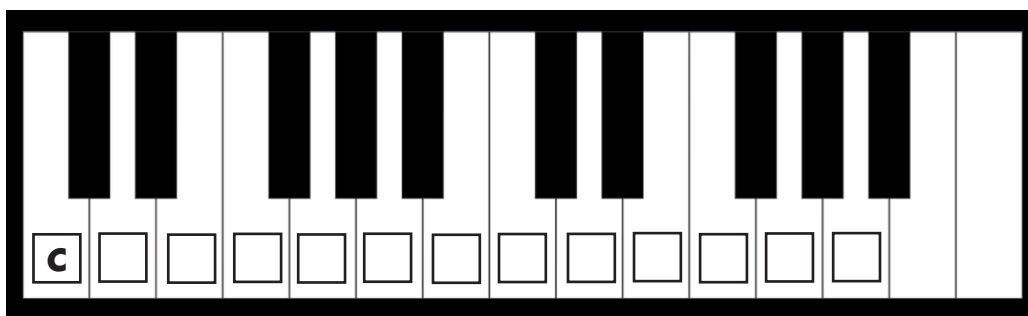
CDEFGHI

ABCDEFG

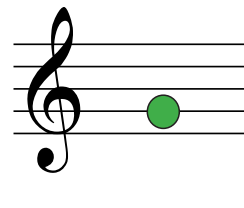
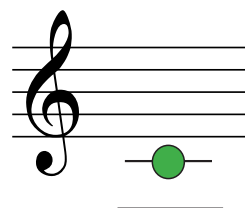
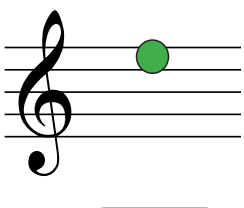
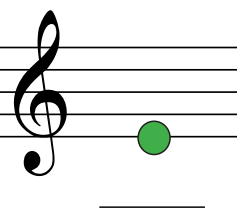
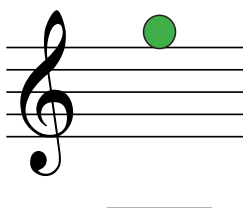
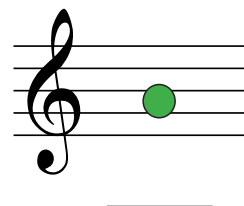
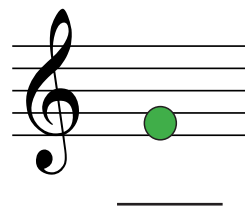
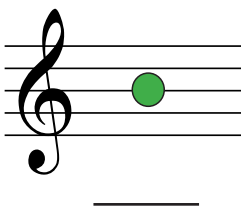
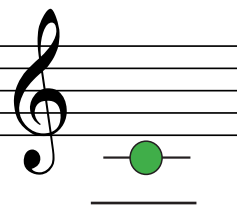
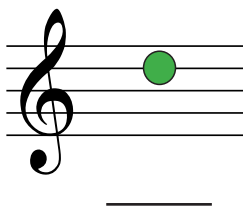
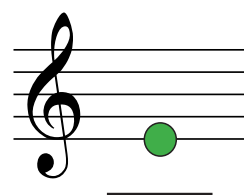
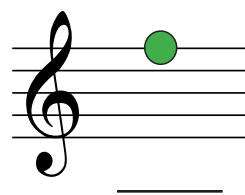
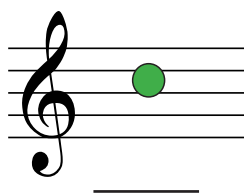
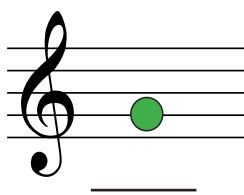
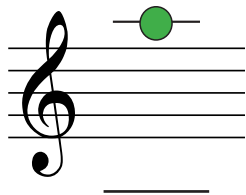
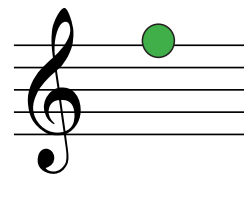
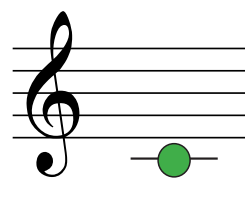
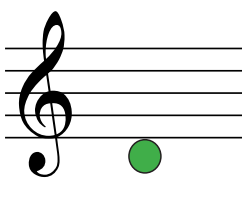
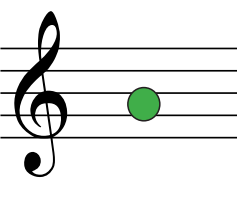
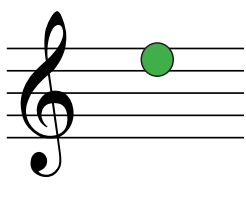
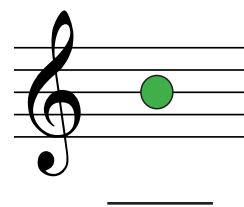
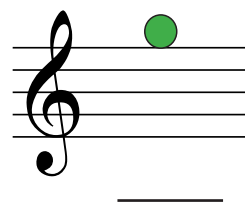
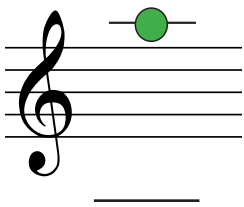
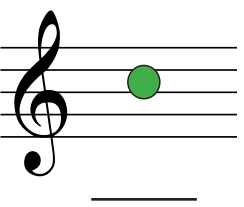
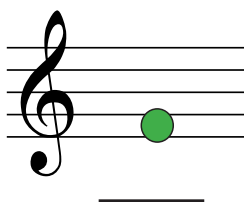
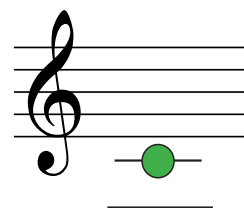
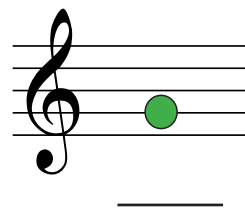
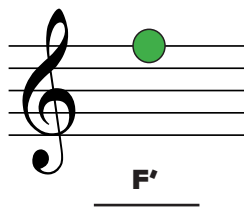
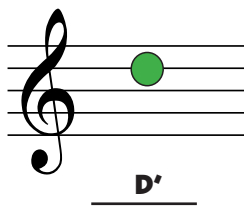
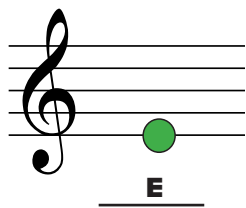
Using the staff below, trace the treble clef and write all of the notes from middle C to high A. Make sure you remember to include ledger lines.



Using the piano, write all of the notes in the boxes from middle C to high A. Draw a circle around the place where the musical alphabet (A B C D E F G) begins.



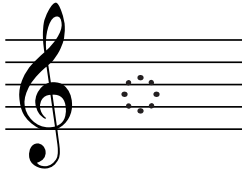
Name the notes on the treble staff.



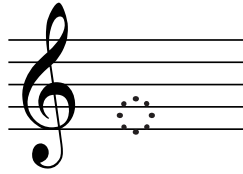
Draw the notes on the correct lines or spaces. Add a ledger line if you need to!



C'



A



F



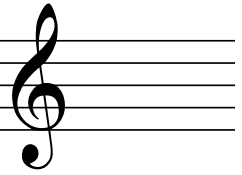
G'



E



D



B



C



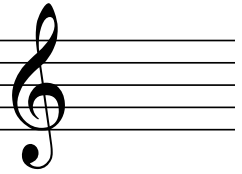
A'



D'



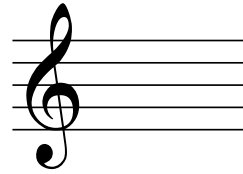
E'



F



G



F'



E



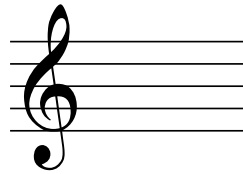
C



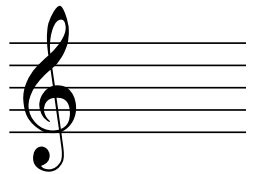
G'



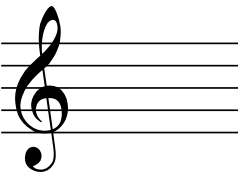
B



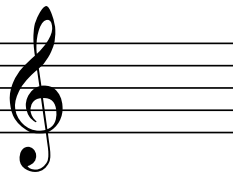
C'



A'



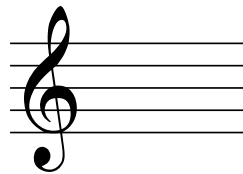
D



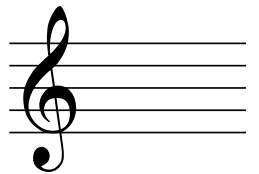
F'



A



E



G